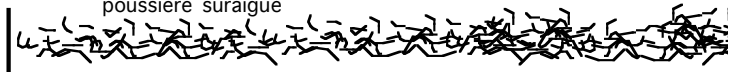


Inoculate?

pour trio trompette, trombone & sax (soprano + basse),
live-electronics, et data-noise Kasper T. Toeplitz

tpt

2 | 

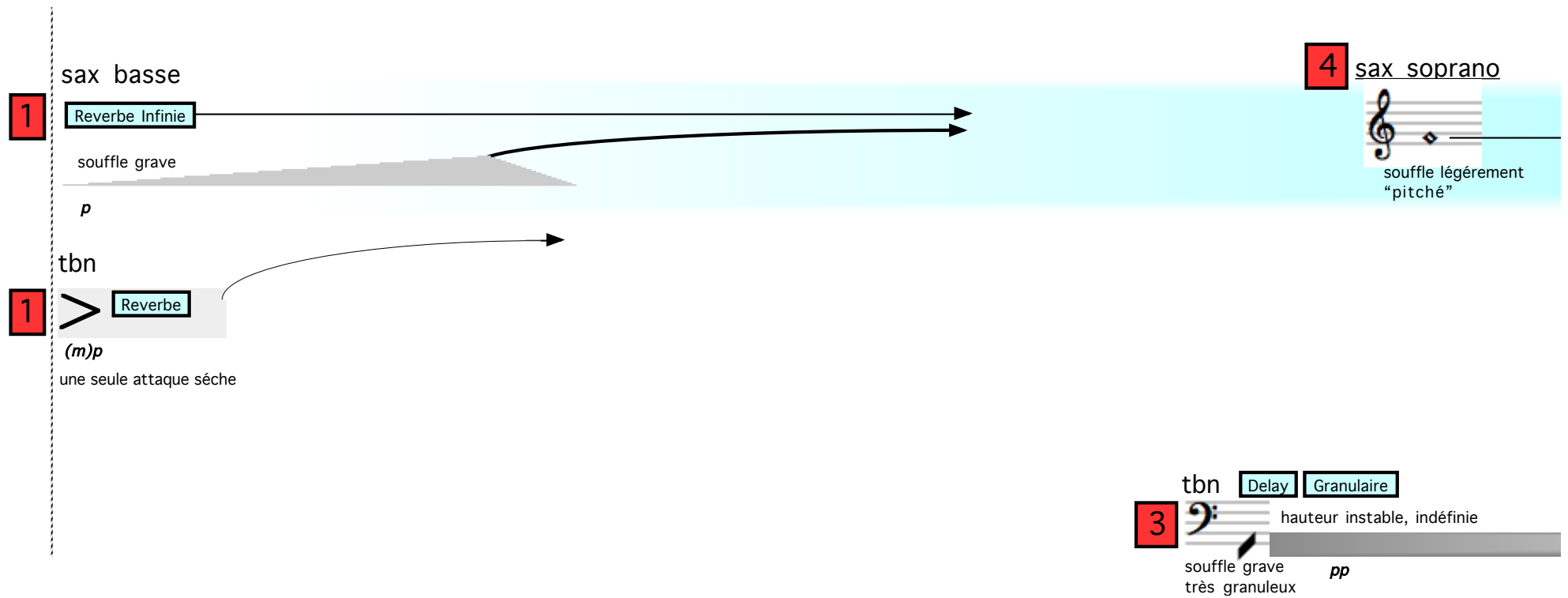
poussière suraiguë

pp

TRES tendu

Inoculate? (#1 - Brume)

sons réels



1 sax basse

Reverbe Infinie

souffle grave

p

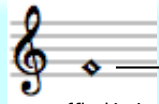
1 tbn

Reverbe

(*m*)*p*

une seule attaque sèche

4 sax soprano



souffle légèrement "pitché"

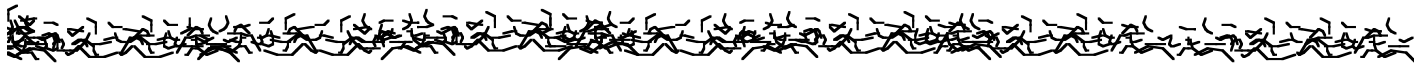
3 tbn

Delay Granulaire

hauteur instable, indéfinie

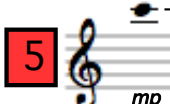
souffle grave très granuleux

pp



ppp


sax soprano Delay

5  *mp* très aérien, beaucoup d'air


plus de souffle que de note

passer la fin du son dans la reverbe infinie

tpt

7  *pp*
souffle légèrement "pitché"

tbn gliss très lent Delay

6  *p*

mf

tpt **Granulaire** poussière suraiguë à la limite de l'audible

8 *pp* *p*

sax soprano

9 *mp* très aérien, beaucoup d'air

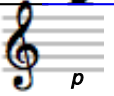
plus de souffle
que de note

10 *pp* tbn
souffle
légèrement
"pitché"



sax soprano

11



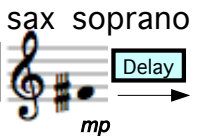
très aérien, beaucoup d'air

13



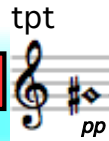
tbn un souffle, court

14



sax soprano

12

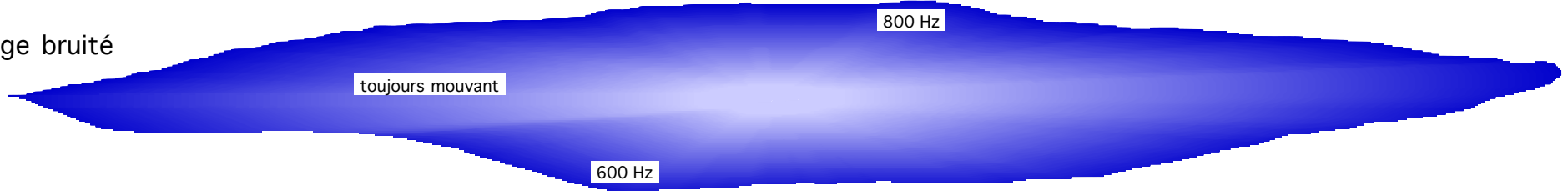


tpt

plus de souffle que de note

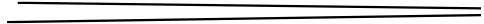
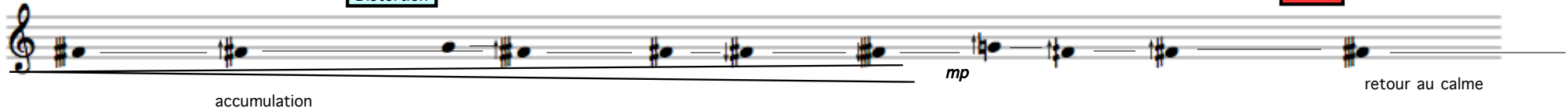
plus de souffle que de note

Nuage bruité



Distortion

15



Inoculate? (#2 - Noise Wall)

sons réels

1

tpt

Delay

son très droit
(1 souffle)

variations microtonales

toutes les notes sont droites

les hauteurs sont prises dans des delays -> accumulation

mp

long crescendo

+ Wavesahping

mf

ouvrir
progressivement
l'ambitus

tbn

Delay

son très droit
(1 souffle)

variations microtonales

toutes les notes sont droites

les hauteurs sont prises dans des delays -> accumulation

mp

long crescendo

+ Wavesahping

mf

2

sax basse

Delay

8

hauteur stable

la note est prise dans le delay -> épaissement

p

tpt Ambitus plein Continuer à élargir et densifier l'ambitus *mf* *f* mélange

4 tpt & tbn durcir le timbre

tbn Ambitus plein Continuer à élargir et densifier l'ambitus *mf* *f* mélange

tpt & tbn ambitus global B2 delay Hold *f* mouvance interne

3 sax *mp* delay Hold

5 sax distorsion monter légèrement agressif, tranché *f* wave shaping

épaisir le bas

6 tpt TRES tendu
p

10 tpt Delay instable : ouverture de l'ambitus
mp

B2 mf

8 tbn Delay grande instabilité et ouverture de l'ambitus
mp

ambitus plein

B3 mf

7 sax distorsion agressif, tranché
8

9 sax distorsion agressif, tranché ff

Fuzz mp

disparition.....

delay Hold

ambitus plein

12 tpt TRES tendu *p*

B2 delay Hold

détérioration progressive, très lente

mf

progressivement granulariser

B3 tbn delay Hold

(borborygmes)

11 tbn droit et épais *pp* *mf*

Filtrage LPF

13 sax ->Reverb

ff

tbn ->Reverb

ff

14 tpt

Delay court

ouverture progressive de l'ambitus

notes très courtes, soufflées

p

mf

tpt

ambitus

B1

B2

delay Hold

f

B3

delay Hold

15 sax

Delay long

ouvrir progressivement l'ambitus

p

mf

16 sax

dans l'ambitus

Heavy Distortion

15 tbn

ouvrir progressivement l'ambitus

p

mf

Delay long

delay Hold

16 tbn

droit et épais

pp

19 tpt ambitus Granulaire et transposition
 mp Longues lignes sinueuses dans l'ambitus

B1 17 tpt ambitus faire sortir des notes - droites - dans l'ambitus
 delay Hold

B2 delay Hold

B3 delay Hold

18 tbn Delay ouvrir l'ambitus
 p son très vocal, instable mf
 courts éclats
 B5 delay Hold

Filtrage LPF
 mf

Très au-dessus

Variations microtonales

prolonger

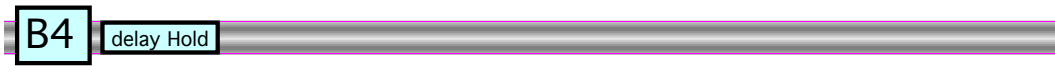
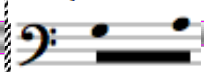
mp

pp

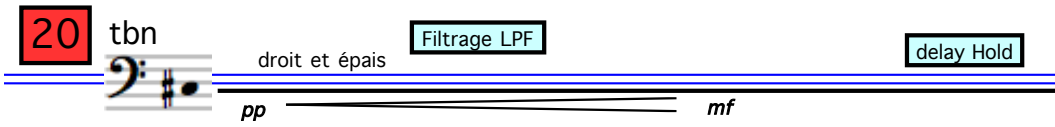
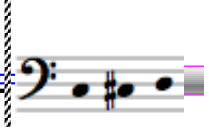
B1   **B1**

B2   **B2**

B3   **B3**

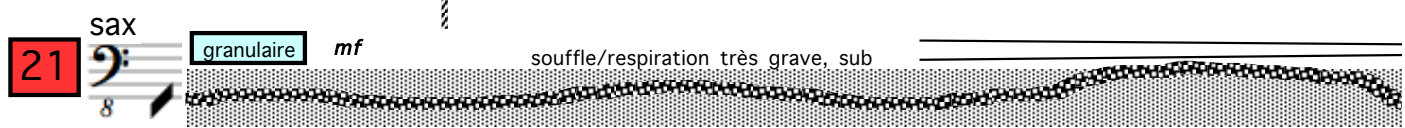
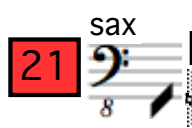
B4 delay Hold   **B4**

B5   **B5**

20 tbn   **B6**

droit et épais **Filtrage LPF** delay Hold

pp *mf*

21 sax  

granulaire *mf* souffle/respiration très grave, sub

tpt
22 delay lente respiration du son (le delay n'est pas entendu - il ne sert qu'à filtrer le trombone)

Ring-Modulation

Trombone : montée sinueuse, lente, microtonale _ jouer le plus possible en glissé, très instable

tbn
23

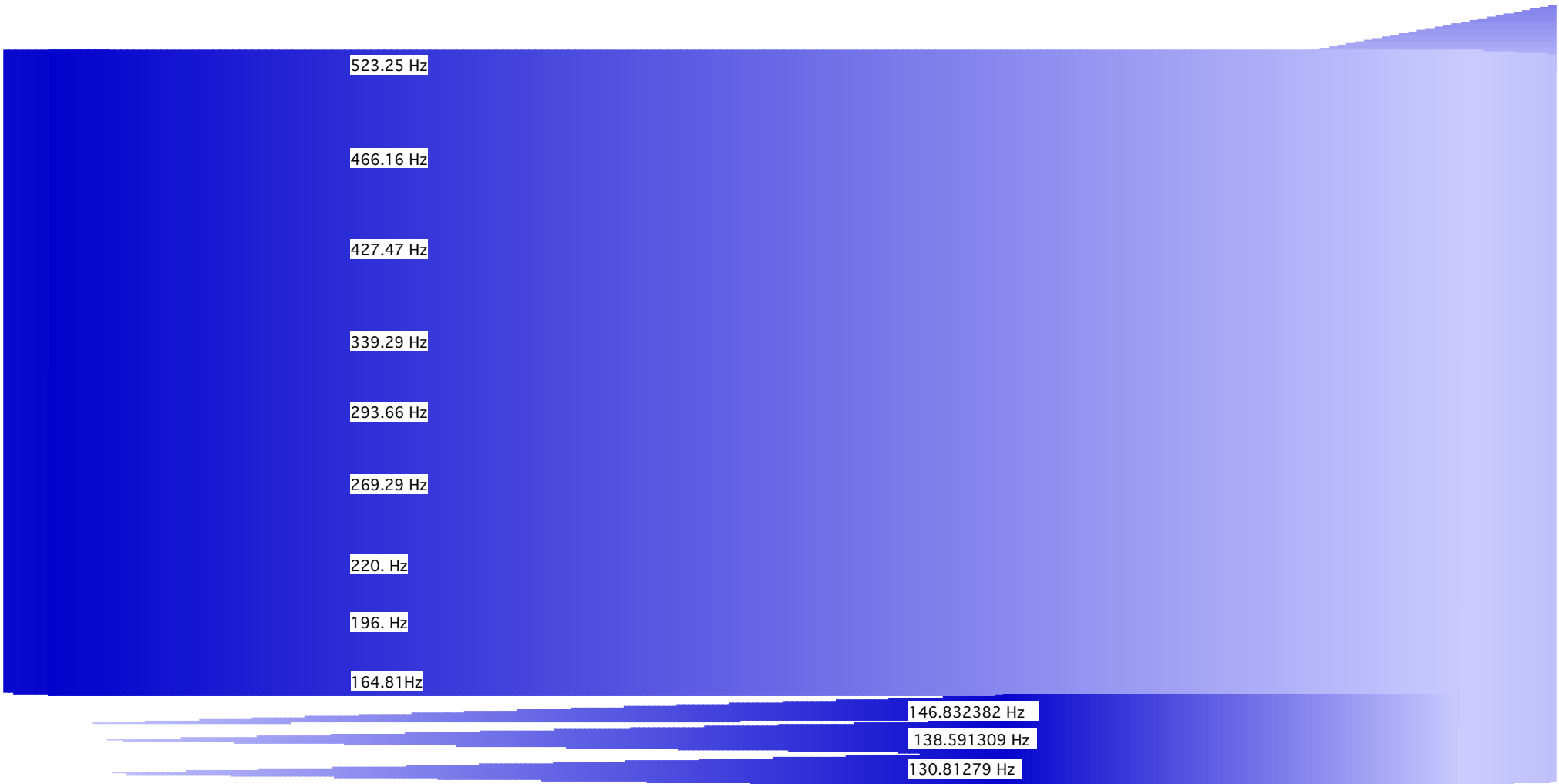
tbn ascension

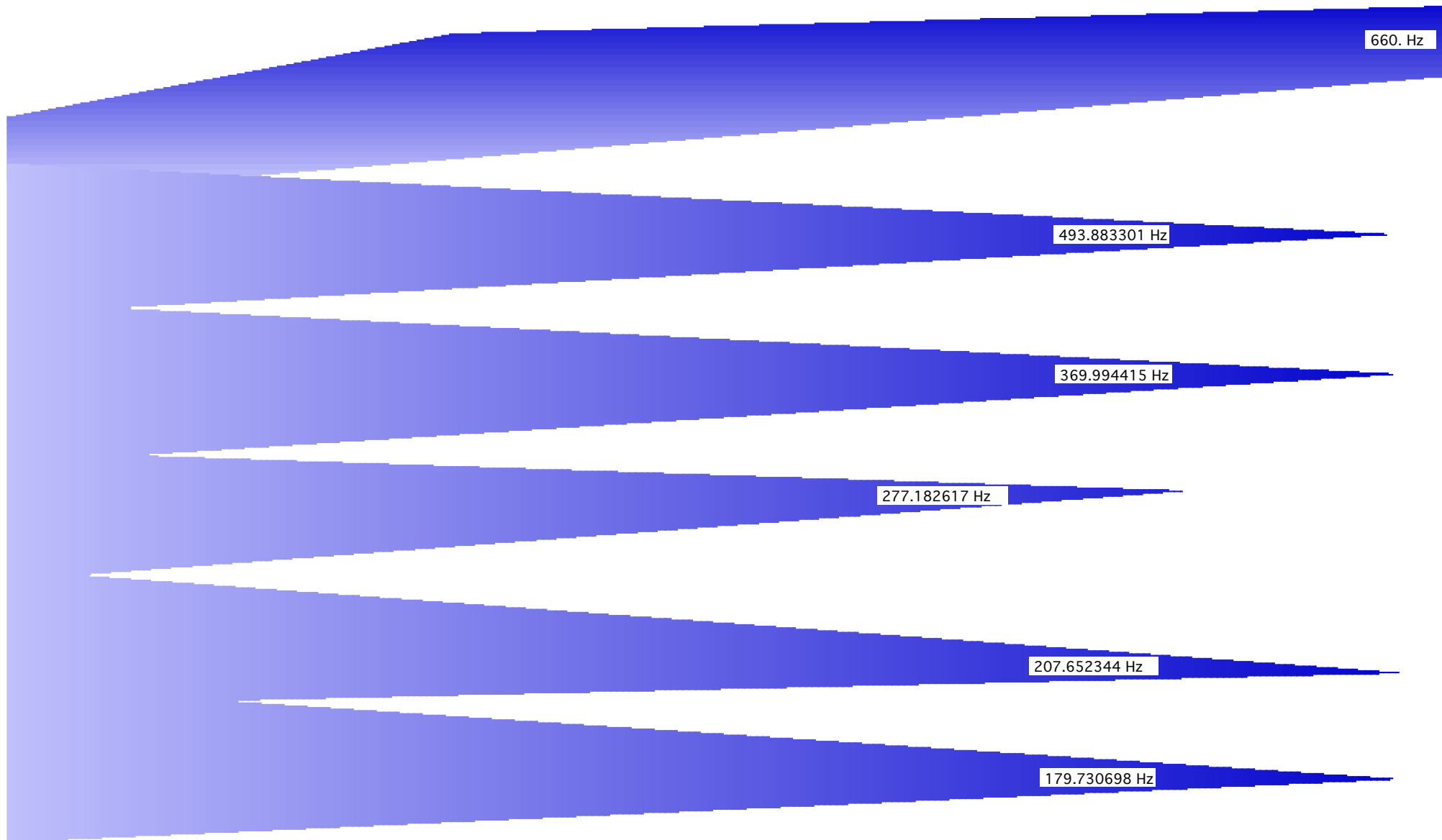
24

Trombone : montée sinieuse, lente, microtonale; jouer le plus possible en glissé, très instable, lié , avec des attaques. Varier les dynamiques.

tbm ascension

The musical score for Trombone (tbm) titled "ascension" is written across seven staves. The first three staves use a bass clef, while the last four use a treble clef. The music is characterized by a complex, microtonal melody with numerous slurs and accents. The key signature features one sharp (F#). The score is flanked by blue vertical bars on the left and right sides.





Inoculate? (#4 - Irradier)

sons réels

The image shows a musical score for three instruments: trumpet (tpt), trombone (tbn), and saxophone (sax). The score is annotated with 'Waveshaping' and 'Ring-Modulation' boxes connected by blue arrows. The saxophone part has a red box with the number '1' and a cyan box with the letter 'L'. The annotations indicate that the sound of each instrument is modulated by a different line.

Trois lignes mouvantes dans l'ambitus 15-18 HZ

Chaque instrument est modulé par une ligne différente

tpt

tbn

sax

tpt



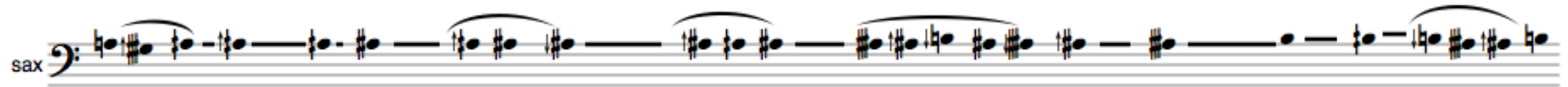
Musical notation for trumpet (tpt) in treble clef. The staff contains a melodic line with slurs and ties, spanning across measures 3 and 4.

tbn



Musical notation for trombone (tbn) in treble clef. The staff contains a melodic line with slurs and ties, spanning across measures 3 and 4.

sax

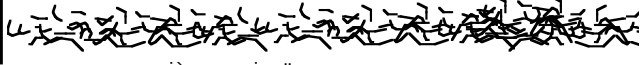


Musical notation for saxophone (sax) in bass clef. The staff contains a melodic line with slurs and ties, spanning across measures 3 and 4.

Trois lignes mouvantes
vers 11000 Hz

L

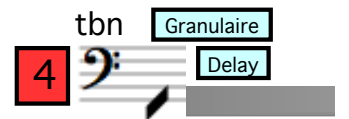
The image displays a musical score for three instruments: trumpet (tpt), trombone (tbn), and saxophone (sax). The score is written in treble clef with a key signature of one sharp (F#). The trumpet part begins with a whole note chord (F#4, C5) and a half note (F#4), followed by a whole rest. A blue square with a diagonal line is placed at the end of the trumpet staff. The trombone and saxophone parts play a rhythmic pattern of eighth notes with various accidentals (sharps and naturals) and are marked with slurs. The saxophone part includes a whole note chord (F#4, C5) at the end of the line.

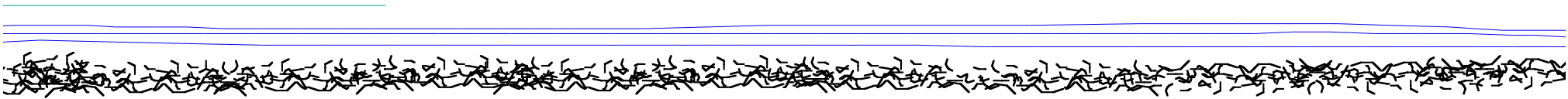
tpt **3** 
pp poussière suraiguë à la limite de l'audible

tpt  **2**

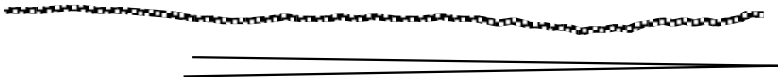
tbn  **3**

sax 

tbn **4**  Granulaire
Delay
souffle grave très granuleux *pp*
hauteur instable, indéfinie



5



6





ppp

pppp

durée : environ 55 minutes

“**INOCULATE ?**” est une
commande de La Muse en Circuit

Kasper T. Toeplitz
mars-mai 2011