

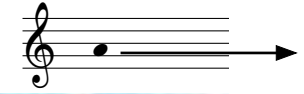
QUAKE

doors open



the high A emerges
from the rumble

PITCH : + 3 octaves



low very quiet rumble, as a very low and deep breathing (of the ocean ?)



0'00"

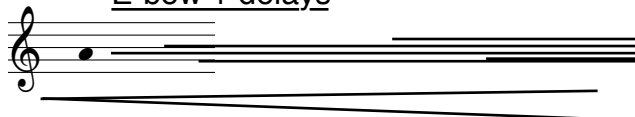
+3'00"

5'40"

minimal parasites

Krackles (static
Bow on strings + bit
crusher)

E-bow + delays



PITCH : + 3 octaves

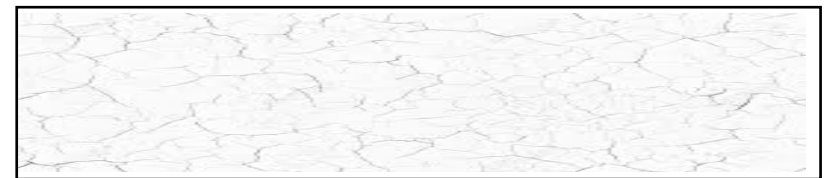
overlapping delays
and pitches

(with reverb, half hidden voices,
half strange breathing)



first with a bow,
then bare hand

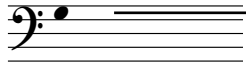
CB : phantom voices



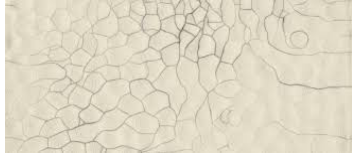
CB : crackles with a more acoustic
sound - more into the "wood"

8'50"

Open string



PITCH : + 1 octave



High G, e-bow. Open string + 1 octave. More electric with Small stick on the string - acoustic distortion. Later move to metal bar on the string (at the bridge). With Delays

11'10"

Bowed High C



Bowed High C (+1 octave but soon no octaver) + micro-melody on the High C string (tremolos + basic intervals, minor 5, 5th, 2nd) - very "arco"

Add "melody "on top

13'00"

Small High grains on top

LOW C (first low !!!) which "rings" through



LOW C

Resonant

create tension



CB

Double Bass



15'00"

18'30"

20'00"

CB : foam rinding on top of the wave

long bowed sinious lines - on double-strings

a wave of pure fuzz

High grains on top of the wave

decay of the fuzz wave



very long crescendo

a wave of pure fuzz (Big Muff) which covers it all ; at some point(s) bursts of lows (octaver down) ON/OFF

20'30"

23'00"

granular wind

slow breathing

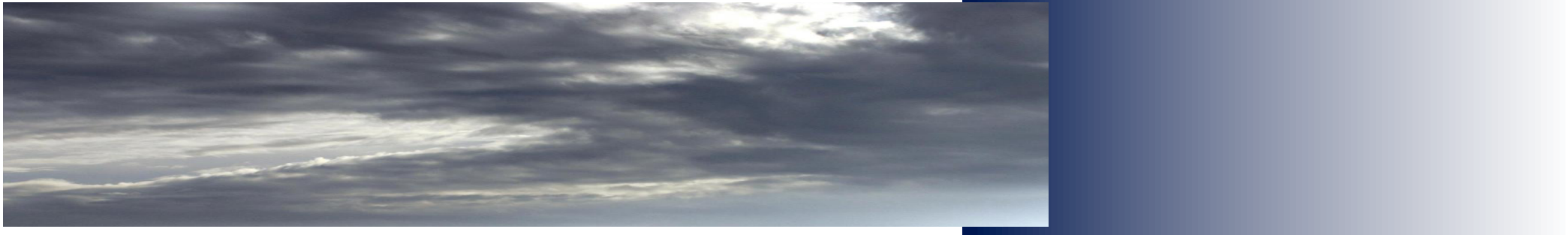
grains stay +
Breathing bow

fuzz wave is gone, some
grains stay + Breathing bow

Small granular wind, mutates
into slow breathing (bowed)

Mix between slow breath /bow
and Small High grains

played arco



24'00"

28'00"

30'00"

34'00"

"Rings"

Double Bass



the bowed acoustic bass is ring-modulated by the rings - so 2 more notes are produced, the sum and the difference (in Hz) - if you play in the same register, the result tends to produce note(s) at the upper octave and low notes so low you don't hear it. On the contrary if the difference is say 1 octave or so the difference produces an audible LOW note, plus some highs.

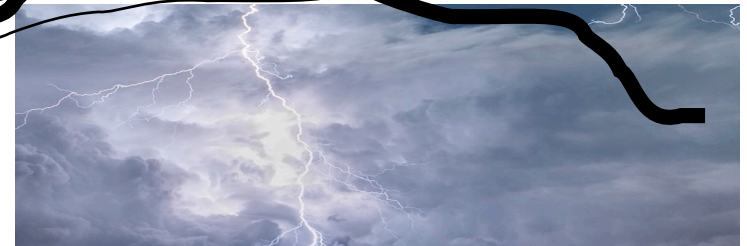
Small High
grains on top !!!

End of rings

the "Rings" are played by the dancers They are in an ambitus between C# and F# - ascension is the global movement we want

two simple sounds controlled by the "rings" the dancers wear play an ascension from 1000 Hz to 2000H

double-bass in ring-modulation (F# as "base note)



percussive - distant
thunder

35'10"

fuzz + ebow

- just the acoustic sound
non-modulated stays



from ebow switch
to tremolo picking +
harmonising

52'00"

Low C +
harmonisation

"static solo" on top



sudden!! CUE !!

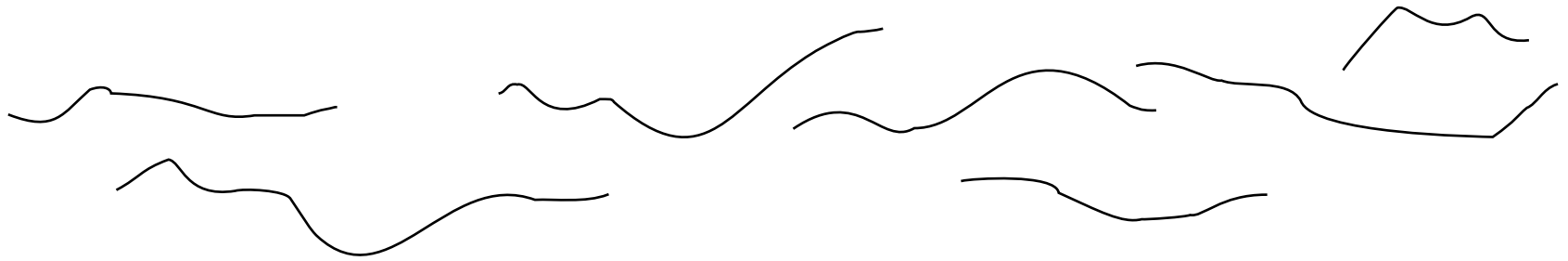
slow and long
decreasing on low
bowing, with a dense
texture. Closing of filter.

58'45"

CODA

harmonic whales
dance

play high on the low string



END at 60'00"